

Guide to the 2015 UNM Paleoindian Archaeology Field School (ANTH 375 or 575)



Course Dates: May 27 through June 21, 2015

Course Credits: Students must register for ANTH 375 (undergraduate) or ANTH 575 (graduate) and will receive 6 credit hours.

Field School Costs: \$1434, includes cost of housing and transportation to and from the site from housing at Sevilleta NWR.

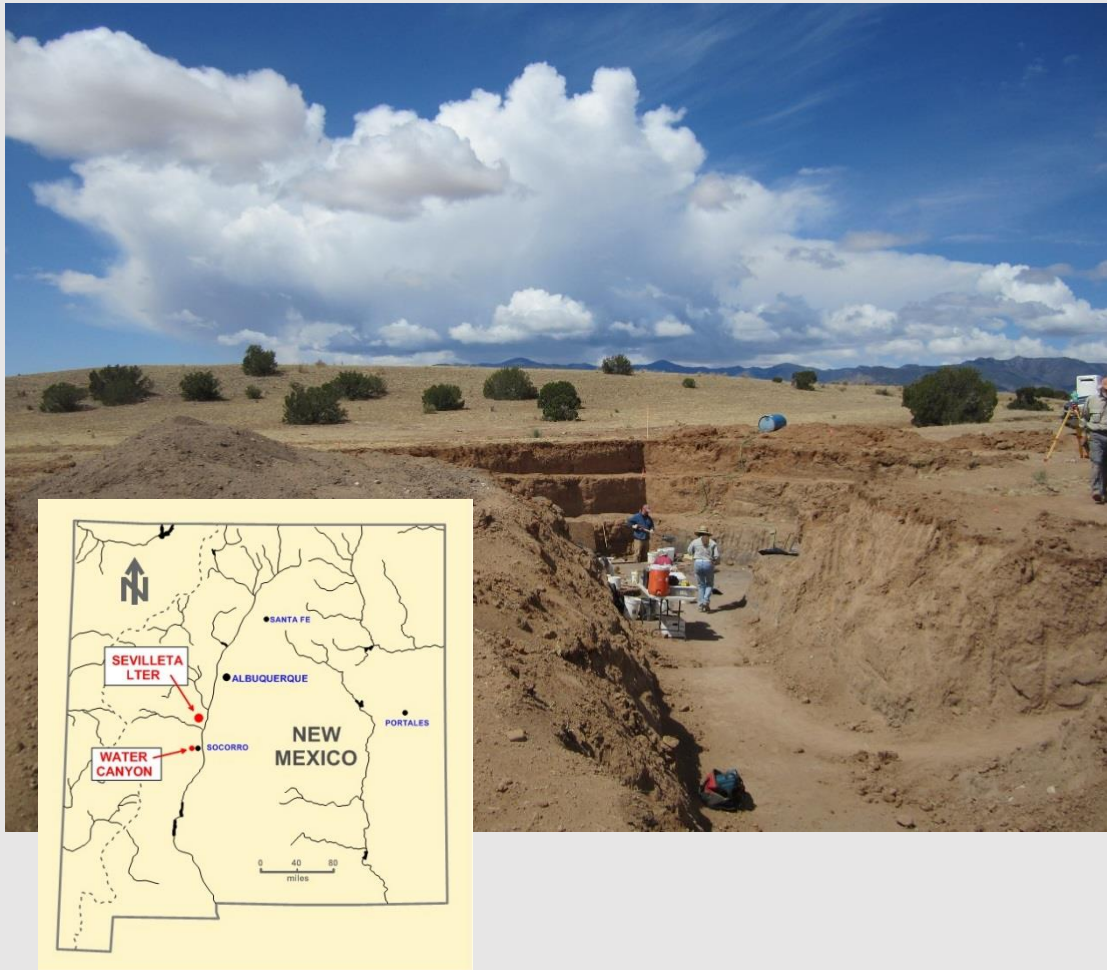
UNM Tuition and Fees (Subject to Change):

Undergraduate Tuition (6 hours) = \$1312.14 / Fees = \$300.00 (In-State or Out-of-State)

Graduate Tuition (6 hours) = \$1439.94 / Fees = \$300.00 (In-State or Out-of-State)

Registration Fees: Approximately \$10 to \$20.

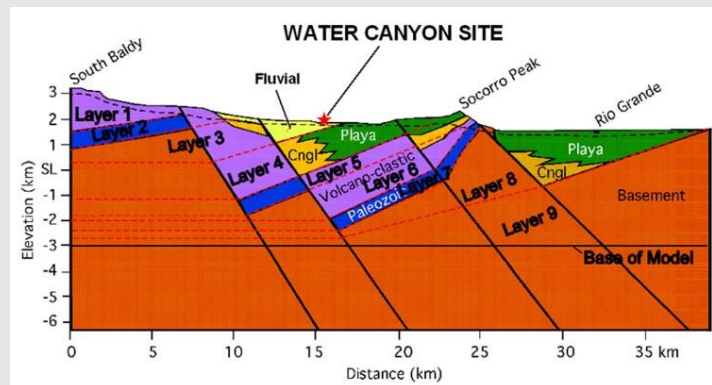
Application: All students who would like to participate in the 2015 UNM Paleoindian Archaeology Field School must complete an application form available [here](#) and submit to Carla Sarracino (address at top of application form). Applications will be reviewed and, because there are only a limited number of student positions available, qualified applicants will be selected on a first-come-first-serve basis. Selected students will receive a “Letter of Acceptance” from Carla Sarracino which will contain registration procedures.



FIELD SCHOOL SETTING: Field work will occur at the Water Canyon Paleoindian Site (LA 134764), west of Socorro, NM (see map) in a basin setting east of the Magdalena Mts and west of the Socorro Mts. The Water Canyon site is located in a juniper savannah setting at 5800 ft elevation above sea level. There are occasional wild and domesticated visitors to the site, including rattlesnakes and other snakes, lizards, insects, humming birds, raptors, coyotes and cattle. Please be cautious! Laboratory work will occur at the Sevilleta LTER UNM Field Station facilities.



FIELD SCHOOL SCHEDULE: Students are responsible for their own transportation to and from the Sevilleta National Wildlife Refuge in Socorro County ([directions available here](#)). Students must arrive no later than the **evening of Tuesday, May 26, 2015**, so as to be prepared for departure to the site by the following morning. Field School will run from **Wednesday, May 27, 2015** through **Sunday, June 21 2015**. Actual field days will run Wednesday through Sunday, with Monday and Tuesday off, for a total of 20 actual field days. Housing will be available for the duration of the field school (27 nights), but students will be free on weekends to travel or take field trips. Vans will leave the Field Station at the Sevilleta LTER promptly at 6 am each morning and return to the Field Station between 5 and 5:30 pm each afternoon of each field day. There will be one 15 minute break each morning and each afternoon in the field, along with a 30 minute lunch break each day.





ACCOMMODATIONS: Field Crews will receive accommodations at the UNM Field Station housing complex within the Long-Term Ecological Research facility of the Sevilleta National Wildlife Refuge (see <http://sev.lternet.edu/node/4448>) Each of three housing units are capable of sleeping up to six individuals and contain a dining area and fully outfitted kitchens.

MEALS: The housing at the UNM Field Station contains fully equipped kitchens, so students will be expected to provide their own meals. This includes packing a lunch each day, as well as supplying fluids to stay hydrated in the field. Excursions to the supermarket in Socorro, NM will be undertaken on a regular basis to allow for students to purchase groceries.

CLOTHING & PERSONAL EQUIPMENT: Please be sure to wear long pants (required) and long-sleeve shirts, if possible. Shorts are not permitted, but if you choose to wear short-sleeve shirt, be sure to bring an ample supply of SPF-40 (or greater) sunscreen. Also, be sure to bring a hat (preferably a broad-brimmed hat) and sturdy shoes (no sandals allowed in the field). Shoes with flat soles (e.g. sneakers) are preferred. Please bring at least 2 liters of water each day, together with a small cooler within which to store your lunch.

FIELD EQUIPMENT: If they prefer, Field School students can bring their personal dig kit. Tools in such a dig kit should include, at a minimum, a pointed trowel, a square-ended trowel, a 3-meter tape, soft brushes, bamboo excavation tools, a whisk broom, a clip board, mechanical pencils & replacement lead, and a narrow dust pan. Tools will also be provided by UNM/OCA.

WEATHER TO EXPECT: During the months of May and June in New Mexico, the weather is typically very warm to very hot (80-100 degrees F) during the day, and cool (46-54 degrees F) during the evening. It will be spring time in New Mexico, so expect strong winds. Thunder and lightning storms and monsoon rains are not likely, but possible.



FIELD REGULATIONS & CAUTIONS: The Water Canyon site is within the locked and fenced confines of a 9,000 acre facility operated by the Energetic Materials Research and Testing Center (EMRTC), a division of the New Mexico Institute of Mining and Technology (New Mexico Tech). Photographs are restricted and no smoking or drinking of alcoholic beverages are allowed on the facility. No one can wander beyond the boundaries of the Water Canyon site without permission and escort. Portable toilets will be available on-site

SUPERVISORS & CREW DESCRIPTIONS: The 2015 UNM Paleoindian Archaeology Field School will be led by Dr. Robert Dello-Russo. Assisting will be 2 Graduate Student Assistants (TAs) serving as Crew Chiefs and 1 or 2 additional Field Assistants (one additional Crew Chief and possibly one Lab Coordinator from the Office of Contract Archeology), together with 12 field school students.

**WE MUST RECEIVE YOUR APPLICATION NO LATER THAN
APRIL 15, 2015**

For More Information Contact:
Carla Sarracino (ajls@unm.edu)

